

TEAC


SERVICE MANUAL

SR-L100

AM/FM STEREO DIGITAL RADIO WITH CD PLAYER



NOTES

- PC board shown are viewed from parts side.
- The parts with no reference number or no parts number in the exploded views are not supplied.
- As regards the resistors and capacitors, refer to the circuit diagrams contained in this manual.
-  Parts marked with this sign are safety critical components. they must be replaced with identical components - refer to the appropriate parts list and ensure exact replacement.
- Parts of [] mark can be used only with the version designated.

CONTENTS

1 SAFETY INFORMATION	2
2 SPECIFICATIONS	3
3 ADJUSTMENT AND CHECKS	4
4 EXPLODED VIEW AND PARTS LIST	6
5 PC BOARDS AND PARTS LISTS	9
6 WIRING DIAGRAM	15
7 INCLUDED ACCESSORIES	17

SR-L100

1 SAFETY INFORMATION

SAFETY INFORMATION

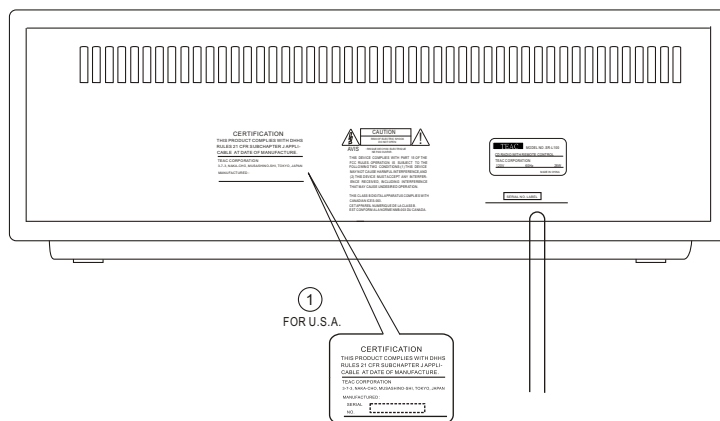
This product has been designed and manufactured according to FDA regulations "title 21, CFR, chapter 1, subchapter J, based on The Radiation Control for Health and Safety Act of 1968" and is classified as class 1 laser product. There is not hazardous invisible laser radiation during operation because invisible laser radiation emitted inside of this product is completely confined in the protective housings. The label required in this regulation is shown ①.

• **CAUTION**

USE OF CONTROLS OR ADJUSTMENT OR PERFORMANCE OF PROCEDURES OTHER THAN THOSE SPECIFIED HEREIN MAY RESULT IN HAZARDOUS RADIATION EXPOSURE.

DO NOT REMOVE THE PROTECTIVE HOUSING USING SCREWDRIVER.

IF THIS PRODUCT DEVELOPS TROUBLE, MAKE A CONTACT WITH OUR SERVICEMAN, AND DO NOT USE THE PRODUCT A TROUBLED STATE.



Optical pickup:
Type : CMS-B35BG6
Manufacturer : Samsung Electro-Mechanic
Laser output : Less than 0.5 mW on the objective lens
Wavelength : 760 - 800 nm

2 SPECIFICATIONS

TUNER SECTION

Frequency Range : FM : 87.50 ~ 108.0 MHz
AM : 530 to 1710 kHz

CD PLAYER Section

Frequency response : 20 Hz ~ 20 kHz (+/- 2 dB)
Wow and Flutter: Unmeasurable

SPEAKER SYSTEM Section

Type : 65 mm x 2
Impedance : 4 ohms

GENERAL

Total Output Power: 4W + 4W
Power Requirements: AC 120V , 60Hz
Power Consumption: 28 W
Dimension (W x H x D): 340 x 125 x 249 mm
Weight: (net) 3.3 kg

Standard Accessories: Remote Control Unit (RC-1075) x1
Battery for Remote Control Unit x 1
Stereo mini plug cable x 1
Owner's Manual x 1
Warranty Card x 1

- Design and specifications are subject to change without notice.
- Illustrations may differ slightly from production models.

SR-L100

3 ADJUSTMENTS AND CHECKS

3-1 TUNER SECTION

- Use a screwdriver with a plastic or ceramic grip for all adjustment.

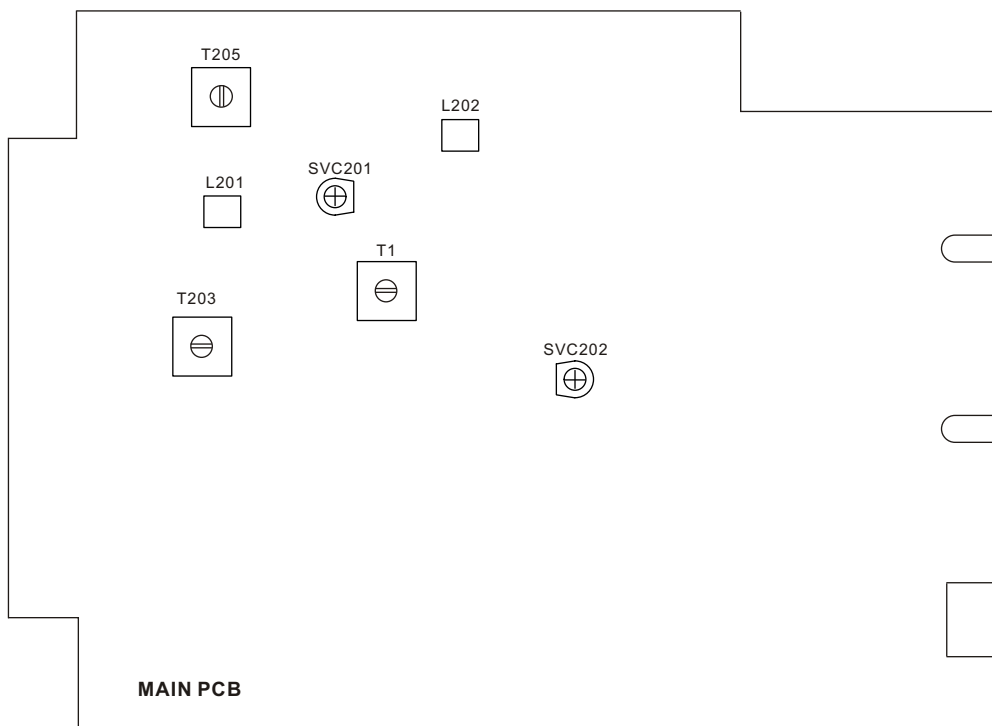
3-1-1 FM adjustment

1. Set the function switch to the FM position.
2. Connect the signal generator output through a 75 ohm dummy antenna to "ANT" on MAIN PCB.
3. Connect the oscilloscope to the speaker terminal.
4. Set the signal generator as listed in the alignment chart.

3-1-2 AM adjustment

1. Set the function switch to the AM position.
2. Connect the test loop antenna across the output of the signal generator.
3. Connect the oscilloscope to the speaker terminal.
4. Set the signal generator as listed in the alignment chart.

3-2 Adjustment and Test Points



3-2-1 FM/AM alignment chart

ITEM	SG SETTING	TUNER SETTING	ADJUSTMENT POINT	ADJUSTMENT
FM				
1. IF adjustment	10.7MHz	108MHz	T205	With 10.7 MHz at zero crossover
2. FM band	87.5MHz 1kHz, +/-22.5kHz dev.	87.5MHz	L202	Adjust for max. output
3. Tracking	108MHz 1kHz, +/-22.5kHz dev.	108MHz		Adjust for max. output
	90MHz 1kHz, +/-22.5kHz dev.	90.1MHz	L201	Adjust for max. output
	106MHz 1kHz, +/-22.5kHz dev.	106.1MHz	SVC201	Adjust for max. output and best waveform.
	Repeat step 3 to obtain best tracking			
AM				
1. IF adjustment	450kHz 1kHz, 30% mod	1710kHz	T203	Center & maxoutput
2. AM band	520kHz 1kHz, 30% mod	520kHz	T1	Adjust for max. output
	1710kHz 1kHz, 30% mod	1710kHz		Adjust for max. output
3. Tracking	600kHz 1kHz, 30% mod	600kHz	AM ANT COIL	Adjust for max. output and best waveform.
	1400kHz 1kHz, 30% mod	1400kHz	SVC202	
	Repeat step 3 to obtain best tracking			

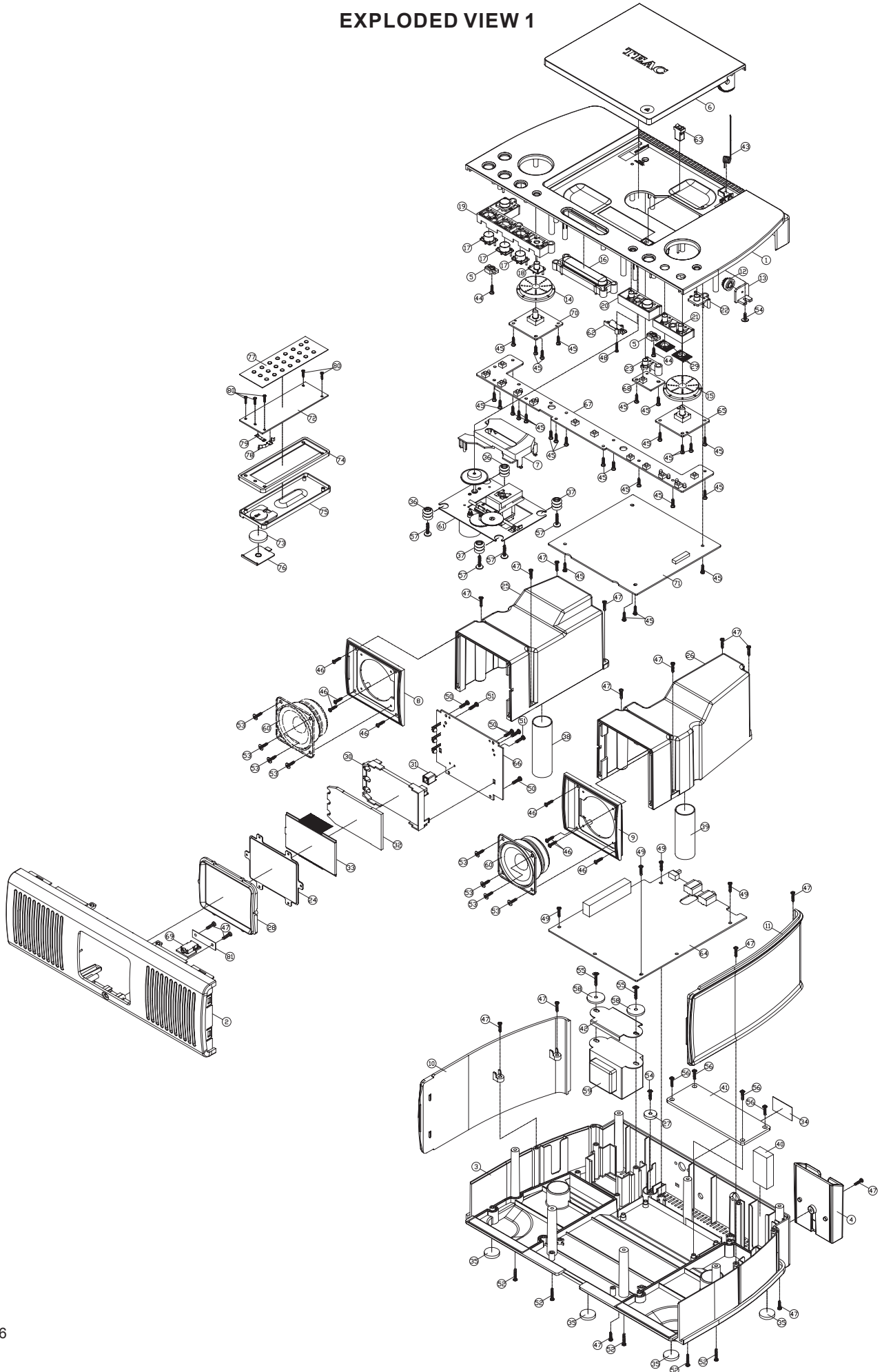
3-3 CD SECTION

Auto alignment.

SR-L100

4 EXPLODED VIEWS AND PARTS LIST

EXPLODED VIEW 1



EXPLODED VIEW-1

REF. NO	PARTS NO.	DESCRIPTION	REMARK
1-1	56-02SL88M08010	TOP CABINET	
1-2	56-04SL10008010	FRONT CABINET	
1-3	56-05SL88M08010	BOTTOM CABINET	
1-4	56-07SL88M18010	REMOTE CONTROLLER BRACKET	
1-5	56-07SL88M48000	CONNECT CLIP	
1-6	56-14SL88M08010	CD DOOR	
1-7	56-15MS0661B000	LASER COVER	
1-8	56-22SL88M08010	SIDE COVER - LEFT	
1-9	56-22SL88M18010	SIDE COVER - RIGHT	
1-10	56-22SL10008000	SPEAKER PANEL - LEFT	
1-11	56-22SL10018000	SPEAKER PANEL - RIGHT	
1-12	56-24SL88M08000	GEAR	
1-13	56-24SL88M18000	GEAR HOLDER	
1-14	56-54SL88M08000	VOLUME KNOB	
1-15	56-54SL88M18000	TUNER KNOB	
1-16	56-54SL88M28010	SNOOZE KNOB	
1-17	56-54SL88M39010	TRANSPARENT KEY-BIG	
1-18	56-54SL88M49010	TRANSPARENT KEY-SMALL	
1-19	56-54SL88M58010	POWER KEY BRACKET	
1-20	56-54SL88M68010	STOP / PLAY KEY	
1-21	56-54SL88M78000	ALARM1/2 - 2 KEY	
1-22	56-54SL88M88000	ALARM CHECK KEY	
1-23	56-54SL88M98000	TIME ADJUST KEY	
1-24	56-57SL10000010	DISPLAY LENS	
1-25	56-62SL88M08000	SPEAKER TUBE - LEFT	
1-26	56-62SL88M18000	SPEAKER TUBE - RIGHT	
1-27	56-69SL88M08000	AC CORD PRESS PLATE	
1-28	56-78SL1000G000	DISPLAY RING	
1-29	56-78SL88M19000	TRANSPARENT KNOB RING	
1-30	56-07SL10009000	LCD BRACKET	
1-31	56-07SL88M28000	REMOTE SENSOR BRACKET	
1-32	56-57SL10010000	DISPLAY LENS	
1-33	57-26SRL1000020	FILTER SHEER	
1-34	57-08SLD88M0020	PVC PLATE	
1-35	58-263152500020	HARD RUBBER FOOT	
1-36	58-61M520R02120	SHOCK ABSORBER (PINK)	
1-37	58-61M620R00120	SHOCK ABSORBER (BLACK)	
1-38	58-64SLD88M0020	PAPER TUBE-LONG	
1-39	58-64SLD88M0120	PAPER TUBE-SHORT	
1-40	58-82SLD8800020	SPONGE	
1-41	61-11SLD88M0020	WEIGHT IRON	
1-42	61-11SLD88M0120	METAL PLATE	
1-43	61-97SLD88M0021	CD DOOR SPRING	
1-44	66-140226180321	SELF-TAPPING SCREW TA/BH 2.6X8MM	
1-45	66-140226210321	SELF-TAPPING SCREW TA/BH 2.6X10MM	
1-46	66-140230212121	SELF-TAPPING SCREW TA/BH 3X12MM	
1-47	66-140230212321	SELF-TAPPING SCREW TA/BH 3X12MM	
1-48	66-140320212321	SELF-TAPPING SCREW TA/PH 2X12MM	
1-49	66-140330180321	SELF-TAPPING SCREW TA/PH 3X8MM	
1-50	66-140330210321	SELF-TAPPING SCREW TA/PH 3X10MM	

SR-L100

EXPLODED VIEW-1

REF. NO	PARTS NO.	DESCRIPTION	REMARK
1-51	66-140330210321	SELF-TAPPING SCREW TA/PH 3X10MM	
1-52	66-140330216321	SELF-TAPPING SCREW TA/PH 3X10MM	
1-53	66-140830210121	SELF-TAPPING SCREW TA/WH 3X10MM	
1-54	66-140830212321	SELF-TAPPING SCREW TA/WH 3X12MM	
1-55	66-140830216321	SELF-TAPPING SCREW TA/WH 3X16MM	
1-56	66-150830180321	SELF-TAPPING SCREW TB/WH 3X8MM	
1-57	66-151426219221	SCREW TWP/BO 2.6X19 MC	
1-58	68-112323161000	METAL WASHER 3.2X16X1MM	
1-59	⚠ 18-203SLD88190	H/TRANSFORMER EI-48	
1-60	19-021082800020	SPEAKER 4 OHM	
1-61	20-70CMSB35BG60	CD MECHANISM	
1-62	41-061120070020	LEAF SWITCH	
1-63	41-210240000010	DOOR LOCK	
1-64	05-01SL10000000	MAIN PCB ASSY	
1-65	05-02SLD88M0010	TUNER PCB ASSY	
1-66	05-04SL10000000	DISPLAY PCB ASSY	
1-67	05-05SLD88M0001	KEY PCB ASSY	
1-68	05-05SLD88M0011	CLOCK PCB ASSY	
1-69	05-09SLD10000000	AUX PCB ASSY	
1-70	05-19SLD88M0010	VOLUME PCB ASSY	
1-71	05-30SL10000000	CD PCB ASSY	
1-72	05-13SLD88M0000	REMOTE PCB ASSY	
1-73	51-021301000080	LITHUM BATTERY DOOR	
1-74	56-43DX01508000	REMOTE FRONT CABINET	
1-75	56-43DX01518010	REMOTE REAR CABINET	
1-76	56-44DX01508010	REMOTE BATTERY DOOR	
1-77	57-33SLD88M0120	REMOTE PLATE - TEAC	
1-78	61-25DX01500020	BATTERY PLATE+	
1-79	61-25DX01500120	BATTERY PLATE -	
1-80	66-140520170121	SELF-TAPPING SCREW TB/KH 2X7MM	
1-81	58-63GR10100020	FIBRE PLATE 32.5X7X1MM	

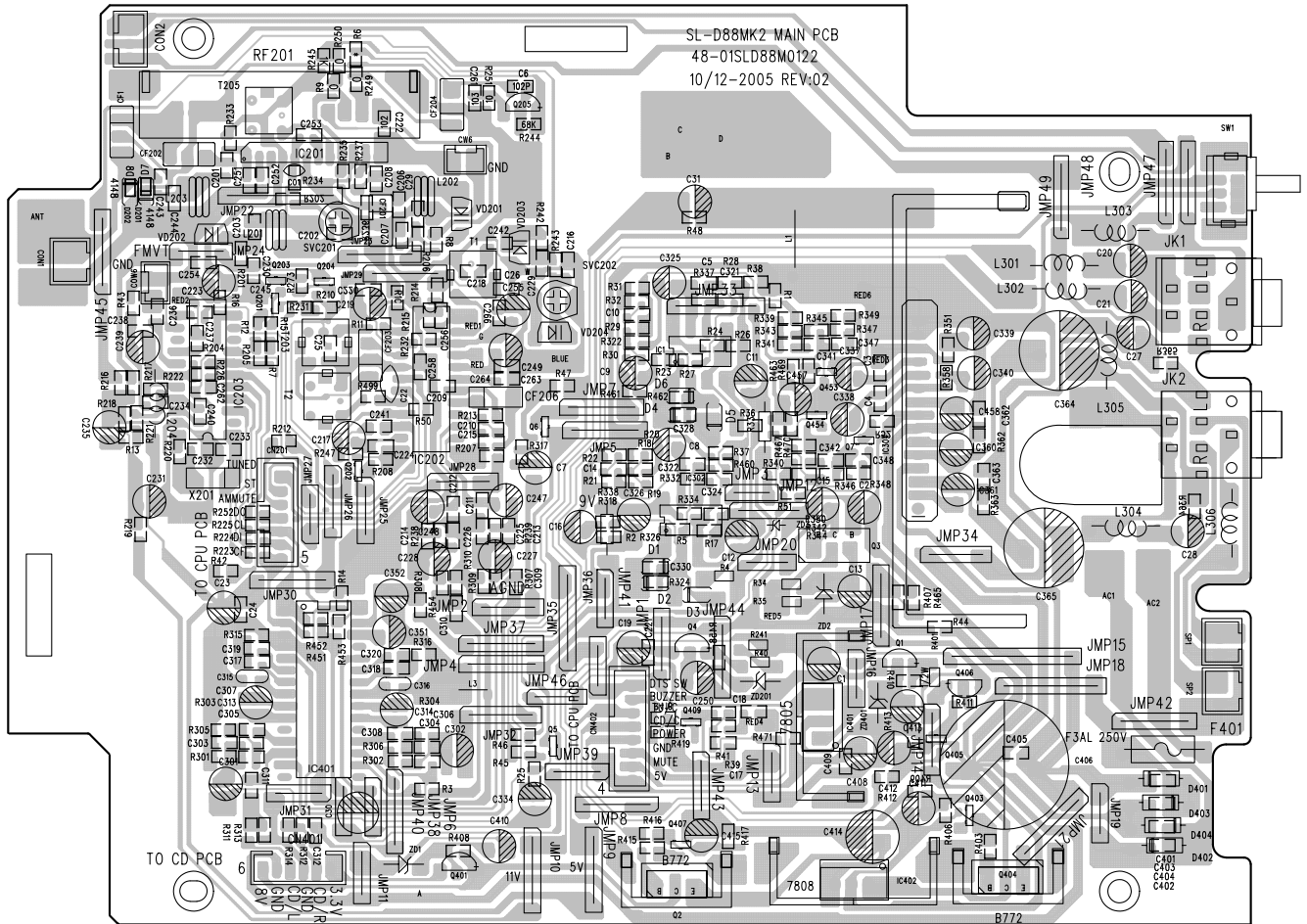
5 PC BOARDS AND PARTS LIST

MAIN PCB ASSY

REF. NO	PARTS NO.	DESCRIPTION	REMARKS
	05-01SL10000000	MAIN PCB ASSY	
	48-01SLD88M0123	MAIN PCB	
	40-212680215020	AMANT COIL 68:15T	
C414	⚠ 26-017100650121	E.CAP 1000UF/10V	
C364,365	⚠ 26-017100750121	E.CAP 1000UF/16V	
C406	⚠ 26-017680850121	E.CAP 6800UF/25V	
CF201	31-028107000120	CER. FILTER LT10.7MA5-A	
CF203	31-026455000110	CER. FILTER SFU450B	
CF206	31-046456000220	RESONATOR ZTB456F15	
CON2	43-01220130120	WAFER 2.MM 3P	
CN201	43-012200170120	WAFER 2MM 7PIN	
CN401	43-012200160120	WAFER 2MM 6PIN	
CN402	43-012200180120	WAFER 2MM 8PIN	
D1-6,201,202	12-1N4148000125	DIODE - 1N4148	
D401-404	⚠ 12-RL2020000021	DIODE RL-202	
F401	⚠ 46-015300300010	AXIAL FUSE 3A/250V	
IC1,302	16-BA4558000021	IC - BA4558	
IC201	16-TA8176SN0021	IC - TA8176SN	
IC202	16-LA1832000021	IC - LA1832	
IC203	16-LC7213100021	IC - LC72131	
IC301	16-LC7534200021	IC - LC75342	
IC304	16-BA5417000021	IC - BA5417	
IC401	16-KA7805000121	IC - KA7805	
IC402	16-KA7808000221	IC - KA7808	
JK2	43-431360001020	PHONE JACK D3.6MM	
L201,203	40-351500135020	FM COIL 5X3.5X0.8MM	
L202	40-351500125020	FM COIL 5X2.5X0.8MM	
L301-306	38-013100050220	AXIAL INDUCTOR 10UH	
Q1,4,401	11-PSS8050C0021	SMD TR - PSS8050C	
Q2,404	11-KSB772YS0021	TR - KSB772Y	
Q3	11-KSD882Y00021	TR - KSD882Y	
Q5,6,201-203,,403, Q405,407,409	11-PMBT39040021	SMD TR - PMBT3904	
Q204	11-KTC9015S0025	SMD TR - 9015S-C	
Q406	11-PSS8550C0025	SMD TR - PSS8550C	
Q453,454	11-9014C0000025	TR - 9014C	
SP1,2	43-012250120120	WAFER 2.5MM 2P	
SW1	41-132222000820	SWITCH SK-22D22-G8	
SV201	27-501602202020	TRIMMER 20PF	
SV202	27-501602102020	TRIMMER 10PF	
T1	40-02660R002020	I.F.T - 660R (RED)	
T2	31-038107020110	DISCRIMINATOR FILTER CDA10.7	
T203	40-02A049004020	I.F.T - A049 (YELLOW)	
T205	40-027400003120	I.F.T - 740 (ORANGE)	
VD201,202	12-1SV101000021	VARICAP DIODE 1SV-101	
VD203,204	12-1SV149000021	VARICAP DIODE 1SV-149	
X201	31-017450002030	CRYSTAL 4.500 MHZ	
ZD1	12-011390320125	ZENER DIODE 3.9V	
ZD2	12-011910320125	ZENER DIODE 9.1V	
ZD3	12-011430320125	ZENER DIODE 4.3V	
ZD201	12-011560320125	ZENER DIODE 5.6V	
ZD401	12-012110320125	ZENER DIODE 11V	

SR-L100

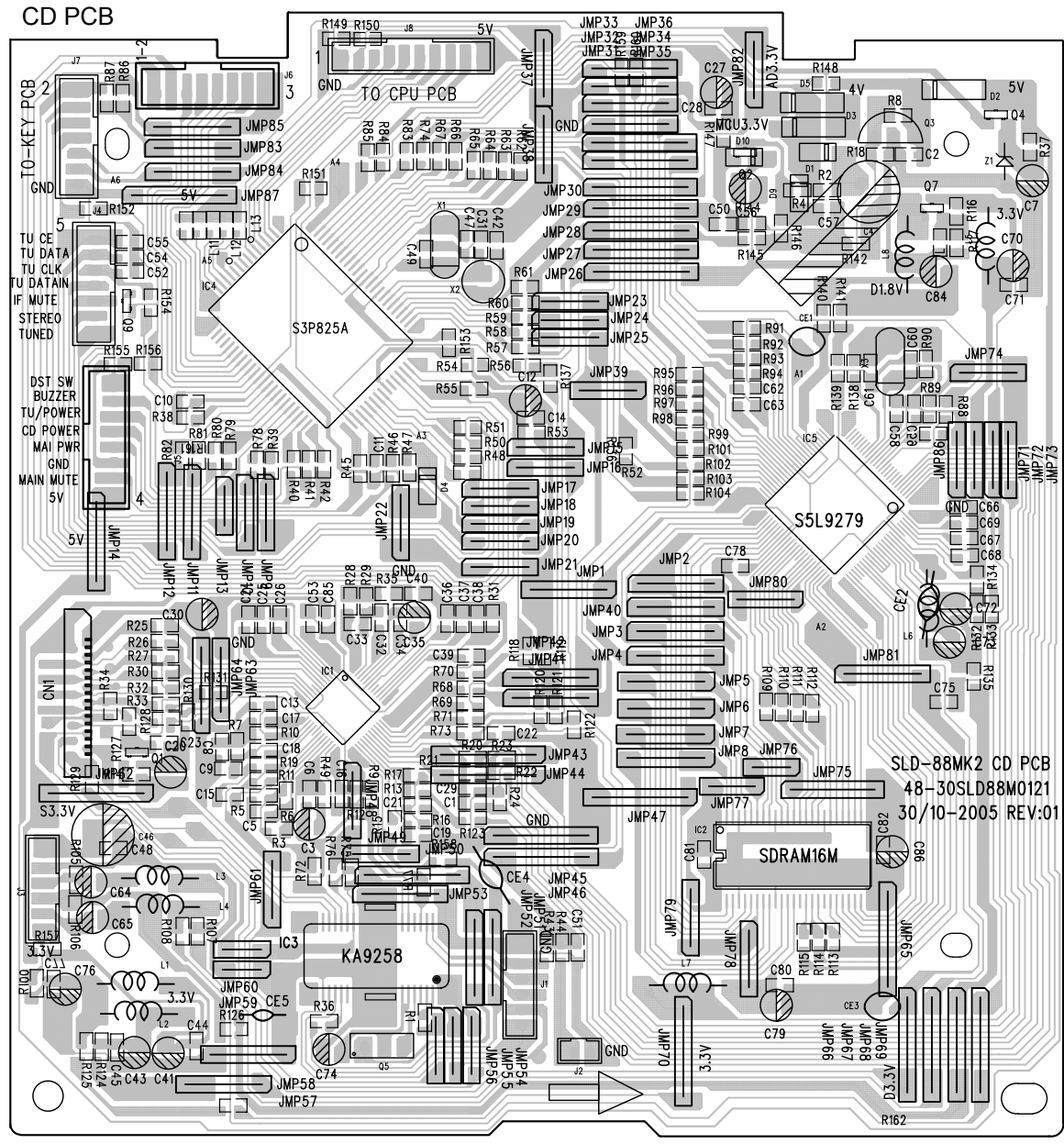
MAIN PCB



CD PCB ASSY

REF. NO	PARTS NO.	DESCRIPTION	REMARKS
	05-30SL10000000	CD PCB ASSY	
	48-30SLD88M0122	CD PCB	
C27	⚠ 26-017100650121	E.CAP - 1000UF/10V	
CN1	43-022100216120	F.F.C WAFER 1MM 16P	
D1,4,9,10	12-1N4148000021	DIODE 1N4148	
D3,5	12-1N4001000021	DIODE 1N4001	
IC1	16-S1L9226X0121	IC - S1L9226X01	
IC3	16-D92580000021	IC - D9258	
IC4	16-S3P825A01121	IC - S3P825AXZZ	
IC5	16-S5L927900121	IC - S5L9279X01	
J2	43-012200120120	WAFER 2MM 2P	
J3	43-012200160120	WAFER 2MM 6P	
J8	43-022200210120	WAFER 2MM 10P	
JMP87	32-033100000020	FERRITE BEAD W/5T 10UH	
L1-6,8	38-013100050020	AXIAL INDUCTOR 10UH	
Q1	11-PMBT39060021	SMD TR - PMBT3906	
Q2,4,7,9	11-PMBT39040021	SMD TR - PMBT3904	
Q3	11-9015C0000021	TR - 9015C	
Q5	11-KSB772YS0021	TR - KSB772Y	
X1	31-017800002120	CRYSTAL 8.00MHZ	
X2	31-015320003310	CRYSTAL 32.768KHZ	
X3	31-018169302220	CRYSTAL 16.9344MHZ	
Z1	12-011470320121	ZENER DIODE 4.7V	
Z2	12-011390320121	ZENER DIODE 3.9V	

SR-L100



SLD-88MK2 CD PCB
48-30SLD88M0121
30/10-2005 REV:01

KEY PCB ASSY

REF. NO	PARTS NO.	DESCRIPTION	REMARKS
	05-05SLD88M0001	KEY PCB ASSY	
	48-05SLD88M0122	KEY PCB	
CON1	43-022200180120	WAFER 2MM 8PIN	
CON4	43-022200170120	WAFER 2MM 7PIN	
D1,2	12-1N4148000021	DIODE 1N4148	
LED3-10	13-011300022020	LED LAMP 3MM	
Q5,7,101-103,105, Q107	11-PMBT39040021	SMD TR - PMBT3904	
Q104	11-PMBT39060021	SMD TR - PMBT3906	
SW2	41-150010110020	TACT SWITCH 4.5MM	
SW101-112	41-150010030010	TACT SWITCH 5MM	

DISPLAY PCB ASSY

REF. NO	PARTS NO.	DESCRIPTION	REMARKS
	05-04SL10000000	DISPLAY PCB ASSY	
	48-04SL10000220	DISPLAY PCB	
Q1	11-PMBT39060021	SMD TR - PMBT3906	
Q2,3	11-PMBT39040021	SMD TR - PMBT3904	
D3	12-1N4148000125	DIODE 1N4148	
LED1,2,3	13-011200121020	LED LAMP 2X4MM (WHITE)	
LCD1	13-05SL10000020	LCD DISPLAY FA1508TT-P	
UI	16-PT6524000021	IC - PT6524-LQFP	
REMOTE 1	17-05FM60380010	OPTIC SENSER #FM-6038TM2	

VOLUME PCB ASSY

REF. NO	PARTS NO.	DESCRIPTION	REMARKS
	05-19SLD88M0010	VOLUME PCB ASSY	
	48-19SLD88M0120	VOLUME PCB	
VOL2	22-501200001020	ROTARY ENCODER	

TUNER PCB ASSY

REF. NO	PARTS NO.	DESCRIPTION	REMARKS
	05-02SLD88M0010	TUNER PCB ASSY	
	48-19SLD88M1120	TUNER PCB	
VOL1	22-501200001020	ROTARY ENCODER	

CLOCK PCB ASSY

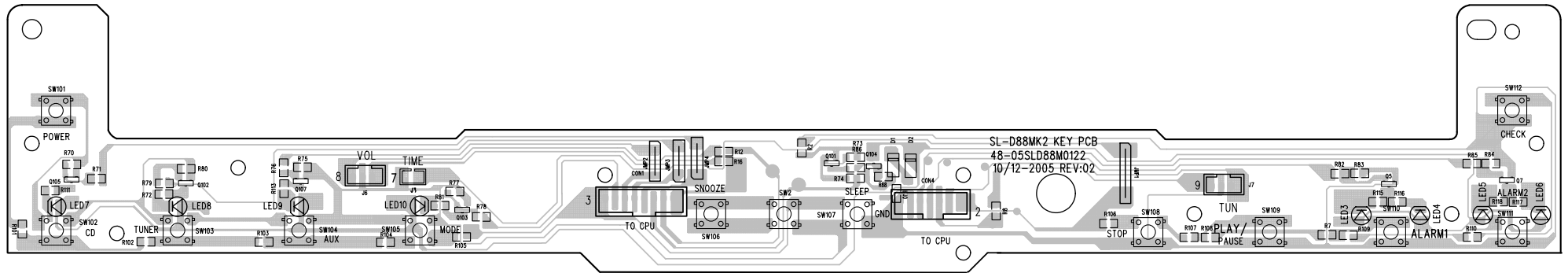
REF. NO	PARTS NO.	DESCRIPTION	REMARKS
	05-05SLD88M0011	CLOCK PCB ASSY	
	48-05SLD88M1120	CLOCK PCB	
SW1	41-150010030010	TACT SWITCH 5MM 4 LEGS	

AUX PCB ASSY

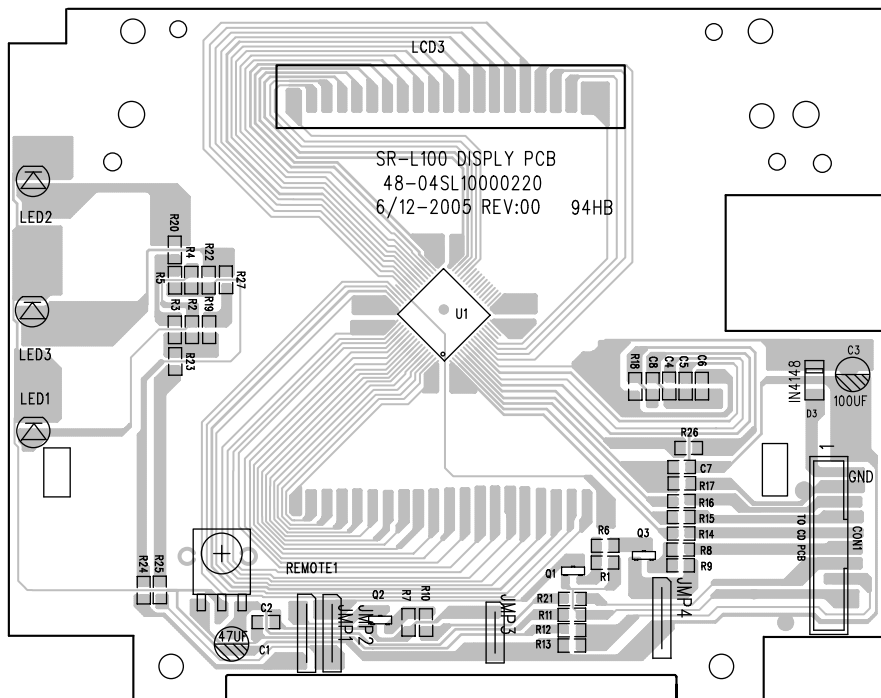
REF. NO	PARTS NO.	DESCRIPTION	REMARKS
	05-09SL10000000	AUX PCB ASSY	
	48-09SL10000220	AUX PCB	
JACK	43-43155000020	PHONE JACK 3.5MM	

SR-L100

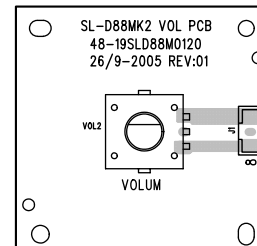
KEY PCB



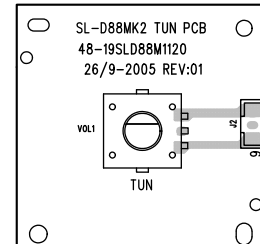
DISPLAY PCB



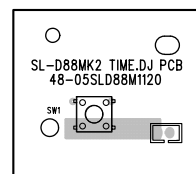
VOLUME PCB



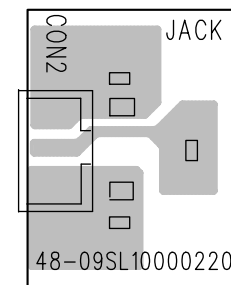
TUNER PCB



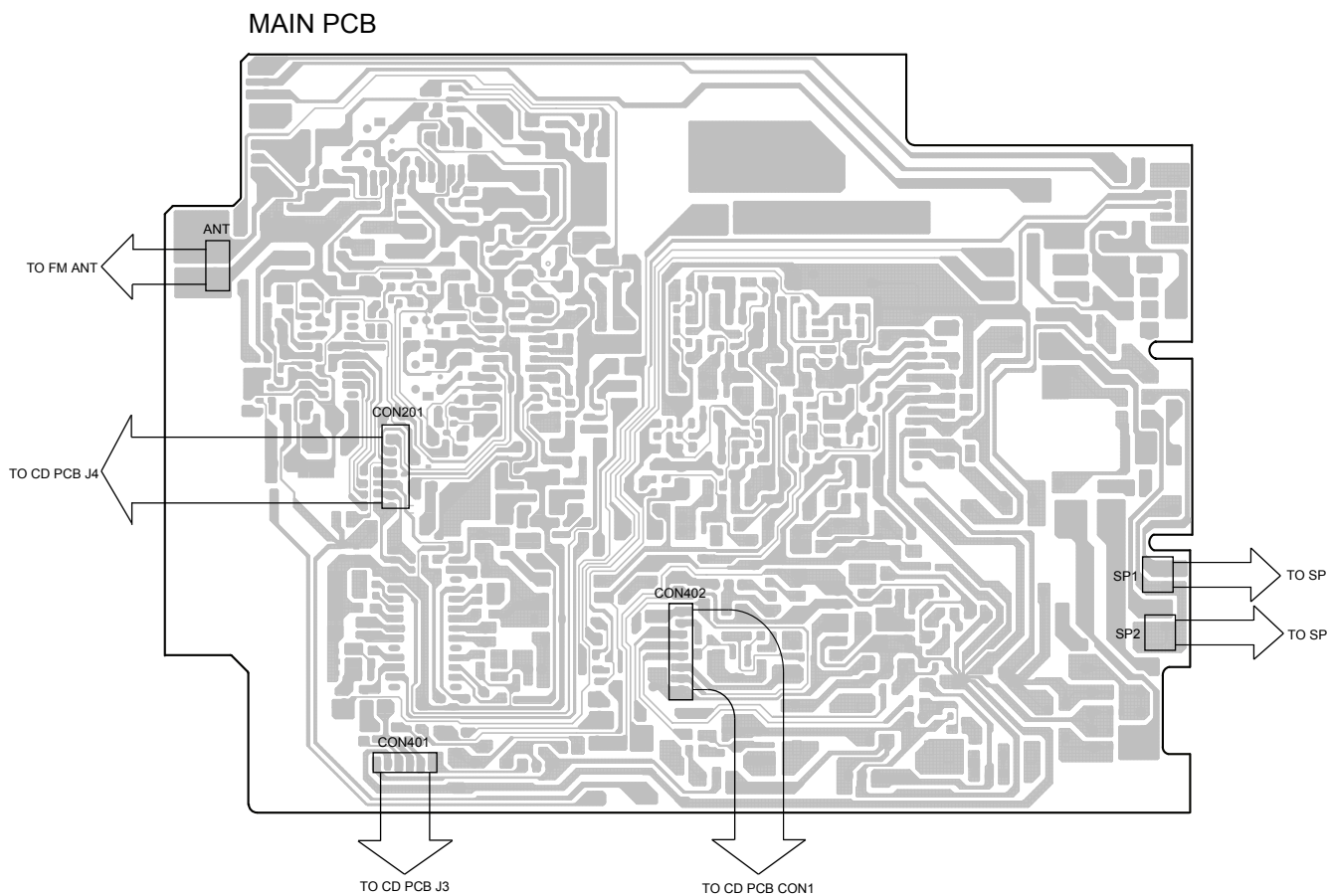
CLOCK PCB



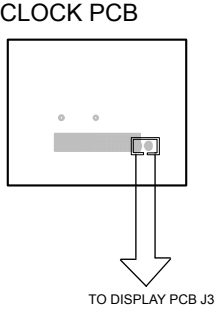
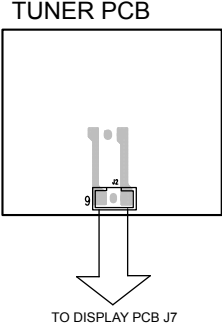
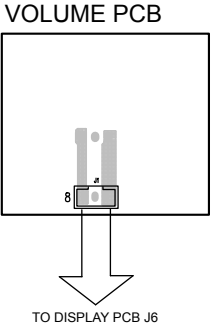
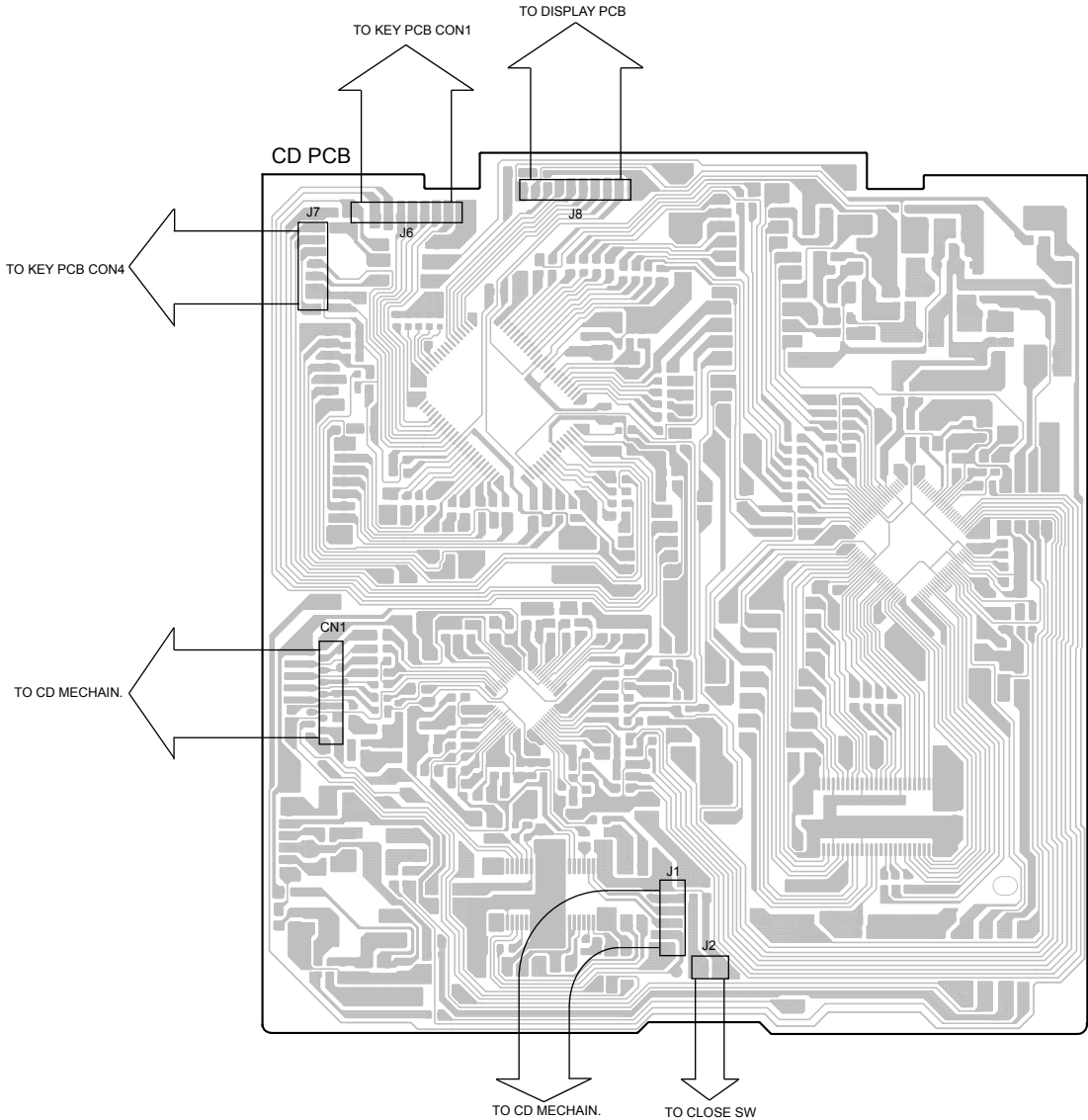
AUX PCB



6 WIRING DIAGRAM



SR-L100



7 INCLUDED ACCESSORIES

INCLUDED ACCESSORIES

REF. NO	PARTS NO.	DESCRIPTION	REMARK
	77-20SL10000020	INSTRUCTION BOOK - E/F/SP	
	02-17SL10000000	REMOTE CONTROL	
	45-263500000020	CONNECT CORD 3.5MM ST/PLUGx2	
	51-021301000080	LITHIUM BATTERY CR2032 (GP)	

SR-L100

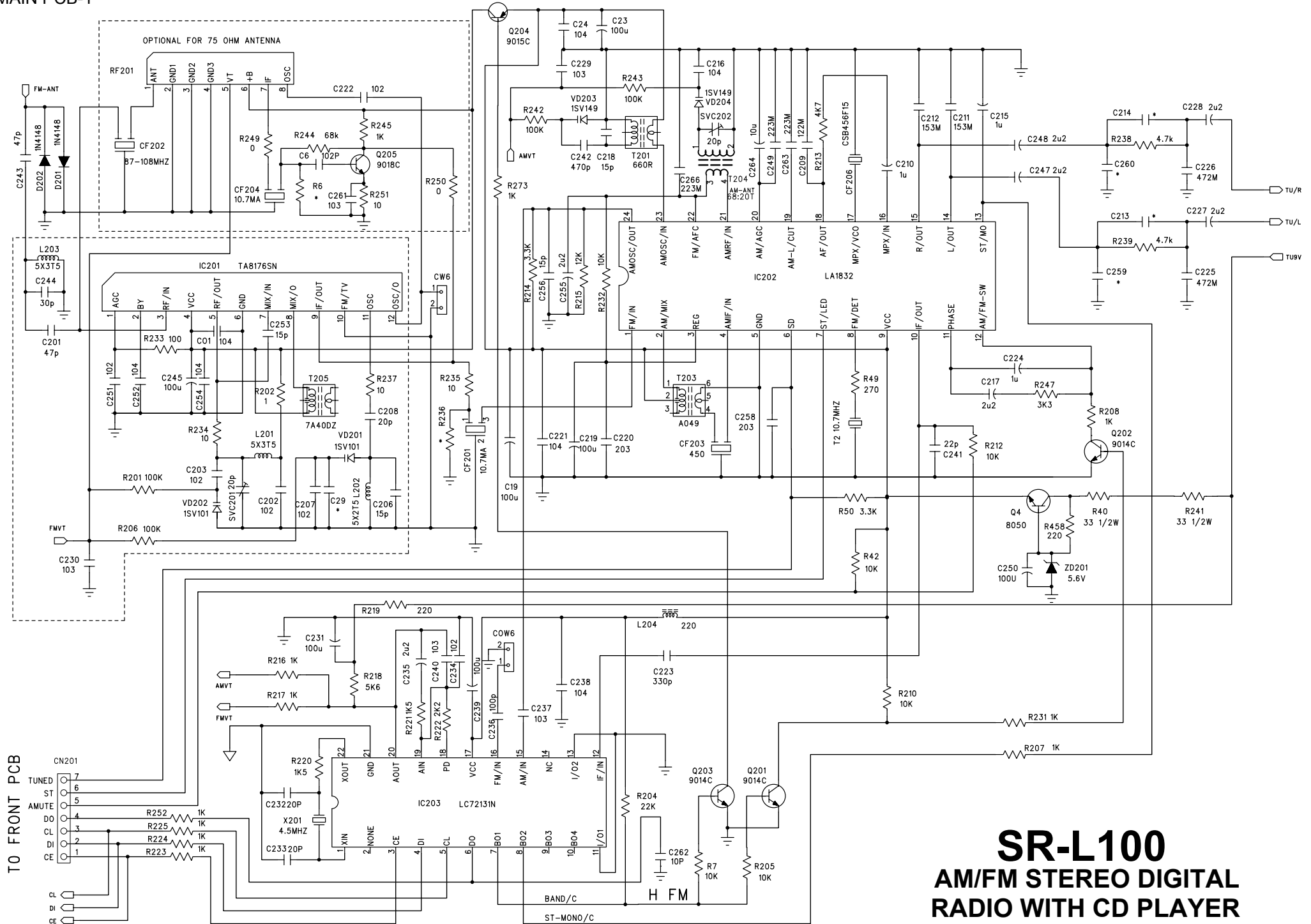
TEAC

TEAC CORPORATION	3-7-3 Nakacho, Musashino-shi, Tokyo 180-8550, Japan Phone:(0422)52-5081
TEAC AMERICA, INC.	7733 Telegraph Road, Montebello, California 90640 Phone: (323)726-0303
TEAC CANADA LTD.	5939 Wallace Street, Mississauga, Ontario L4Z 1Z8, Canada Phone: (905)-890-8008
TEAC MEXICO, S.A.De C.V.	Campesinos N°184, Colonia. Granjas Esmeralda, Delegacion Iztapalapa, CP 09810, Mexico DF Phone: (525)-581-5500
TEAC UK LIMITED	Unit 19 & 20, The Courtyards, Hatters Lane, Watford, Hertfordshire, WD18 8TE5, U.K. Phone:(0845) 130-2511
TEAC EUROPE GmbH	Bahnstrasse 12, 65205 Wiesbaden-Erbenheim, Germany Phone: 0611-71580
TEAC ITALIANA S.p.A.	Via C, Cantu 9/A, 20092 Cinisello Balsamo, Milano, Italy Phone:02-66010550
TEAC AUSTRALIA PTY., LTD.	280 William Street, Melbourne VIC 3000, Australia Phone:(03)9672-2400
A.B.N. 80 005 408 462	

APR 2006

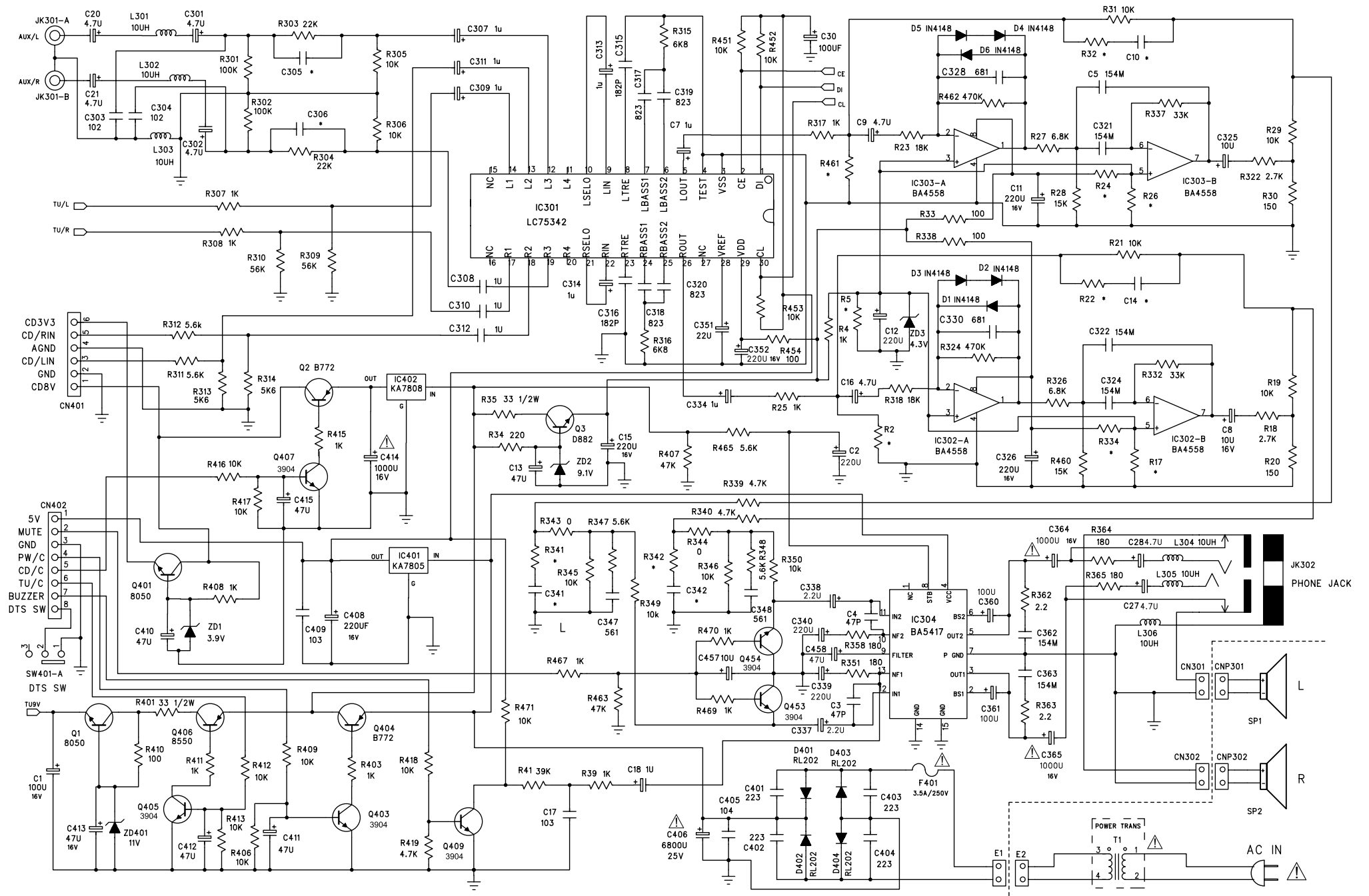
PREPARED IN HONG KONG

MAIN PCB-1



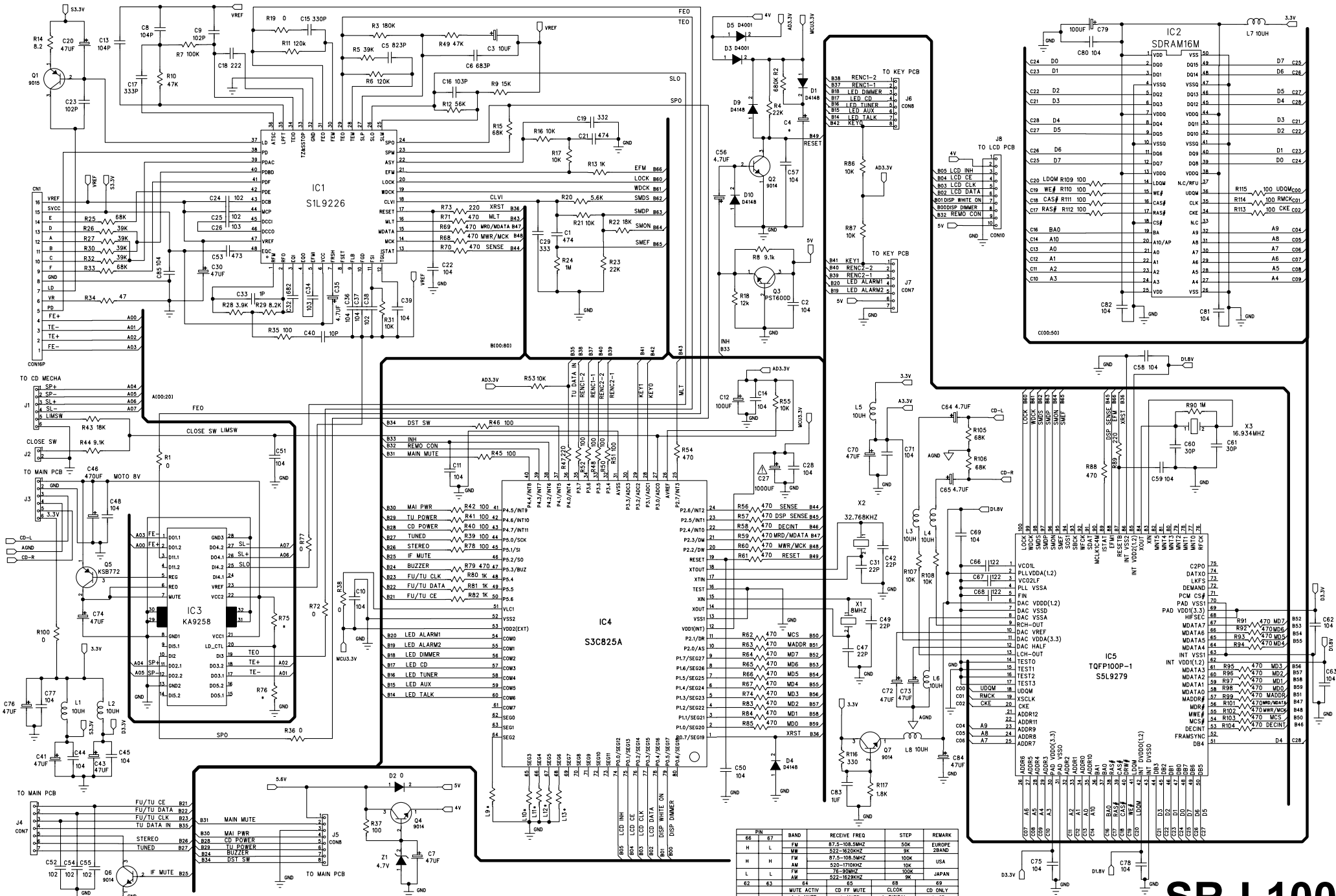
SR-L100
AM/FM STEREO DIGITAL
RADIO WITH CD PLAYER

MAIN PCB-2



SR-L100
AM/FM STEREO DIGITAL
RADIO WITH CD PLAYER

CD PCB

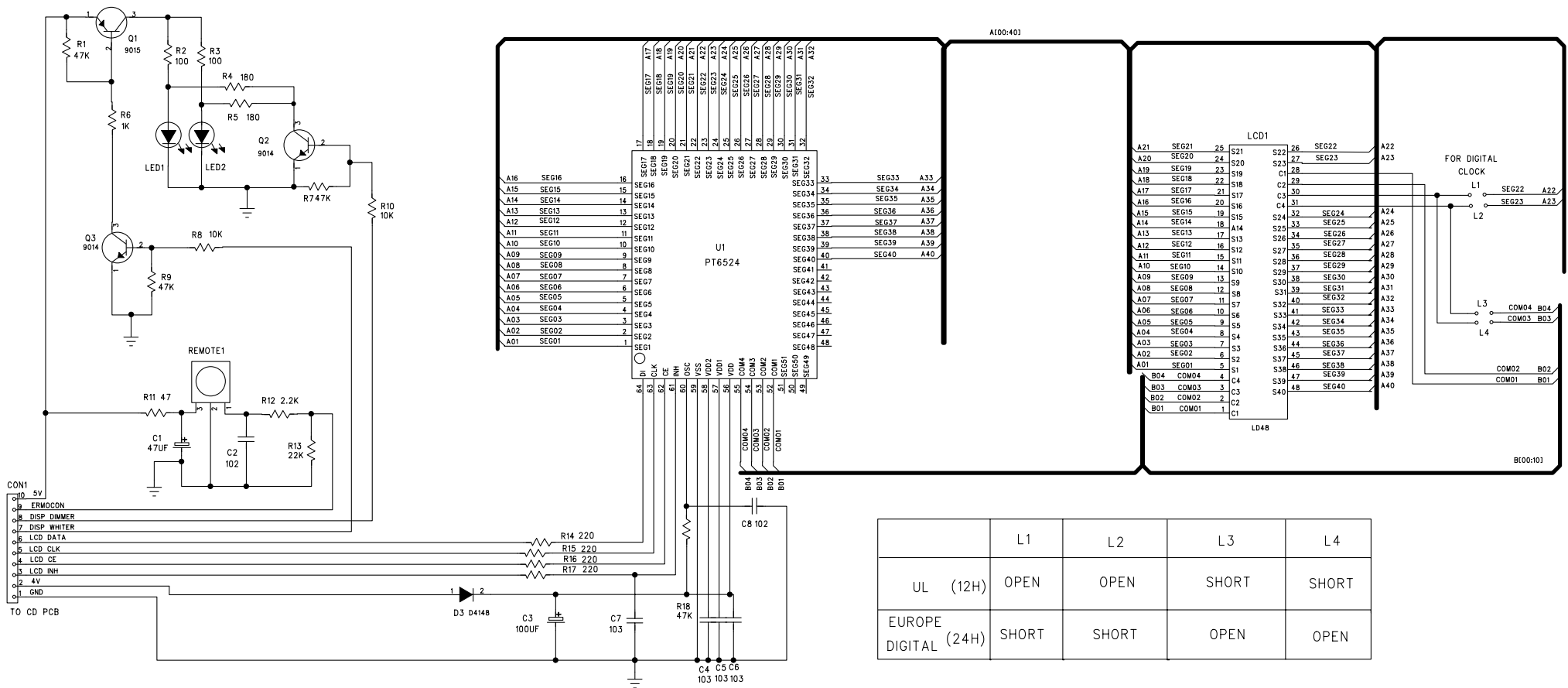


PN	F1	F2	BAND	RECEIVE FREQ	STEP	REMARK
H	L		FM	87.5-108.5MHz	50K	EUROPE 2BAND
H	H		FM	52-76.2MHz	1K	
H	H		FM	87.5-108.5MHz	100K	
L	L		AM	520-1700kHz	10K	USA
L	L		FM	76-200MHz	100K	JAPAN
62	63	64	AM	52-76.2MHz	1K	
			MUTE	ACTV	CD FF MUTE	CD ONLY
			L=MUTE	L=MUTE	L=DIGITAL	L=CD

SR-L100

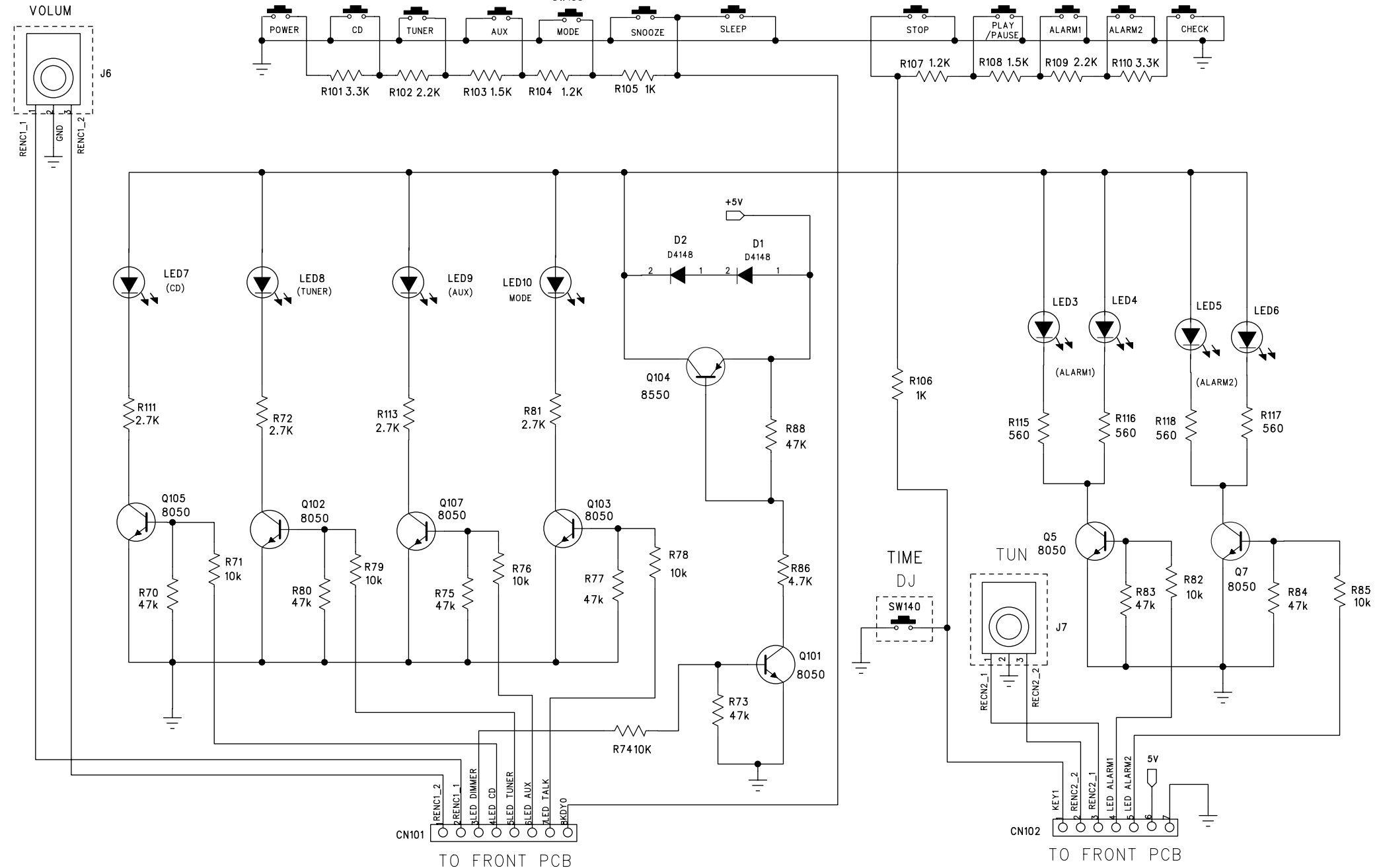
AM/FM STEREO DIGITAL RADIO WITH CD PLAYER

DISPLAY PCB



SR-L100 AM/FM STEREO DIGITAL RADIO WITH CD PLAYER

KEY PCB



SR-L100
AM/FM STEREO DIGITAL
RADIO WITH CD PLAYER